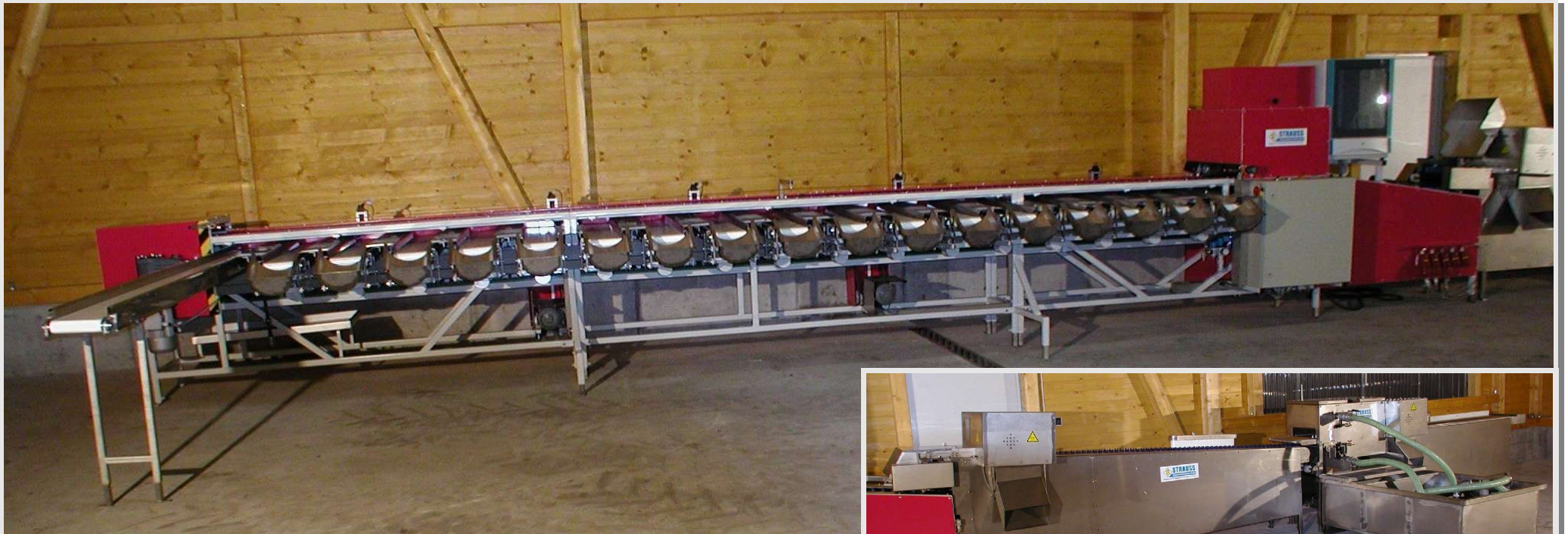


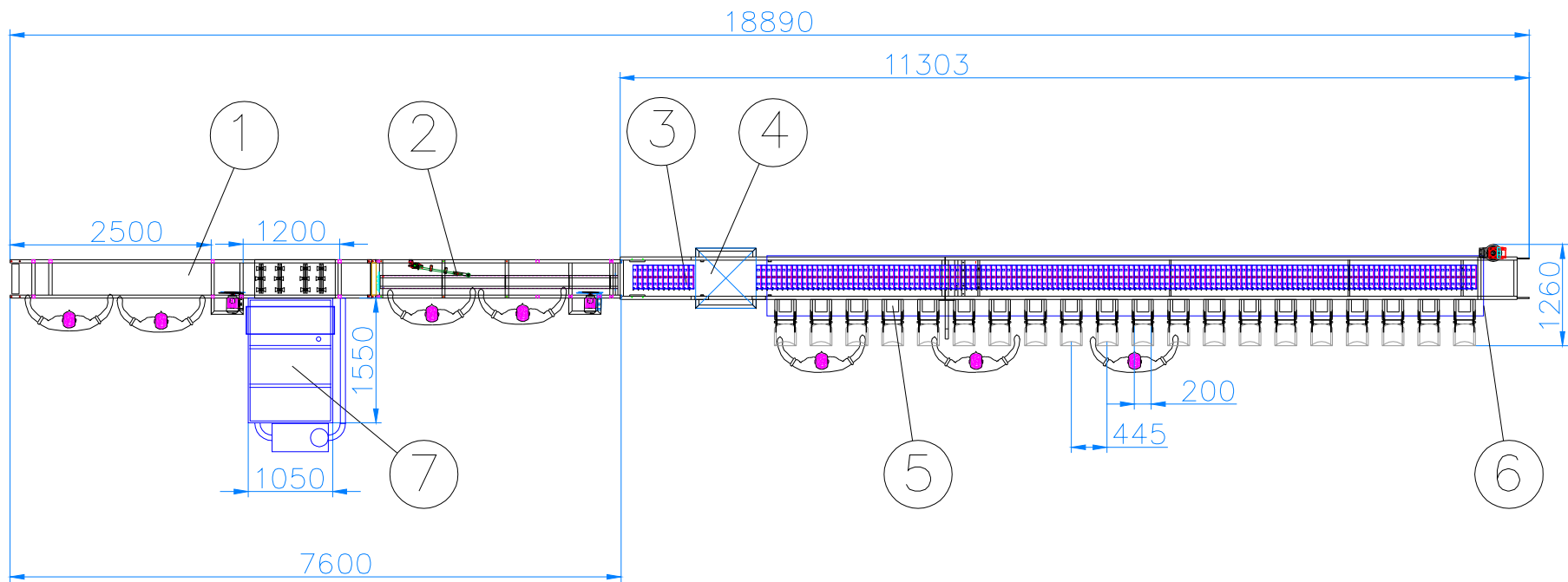
Asparagus Sorter **Opti-Sort I**



sorting machine with 18 outlets



water recycling and separation



Optical Colour-Sorting-System On Video Basis

For detection of:

- colour
- diameter
- length
- curvature
- s-form
- oxide
- head-form

Because the asparagus is turned during it is transported under the video camera, 100% of its surface can be registered.

The program works with pre set parameters witch can be changed individually to the customer's wishes. These individual set data files can be saved. Furthermore account further to sticks and weight for each sorting group, each harvest assistant and field is included.

Assembly of the machine:

1. conveyor- / washing unit
2. separating- / cutting unit
3. one-lane sorting line
4. recognition on video basis
5. cross belts for sorted asparagus
6. deposit for boxes
7. water recycling system

Output data:

- number of cross belts: 10-28
- number of classifications: 9-27 (+1)
- speed : up to 36000 $\frac{\text{sticks}}{\text{hour}}$